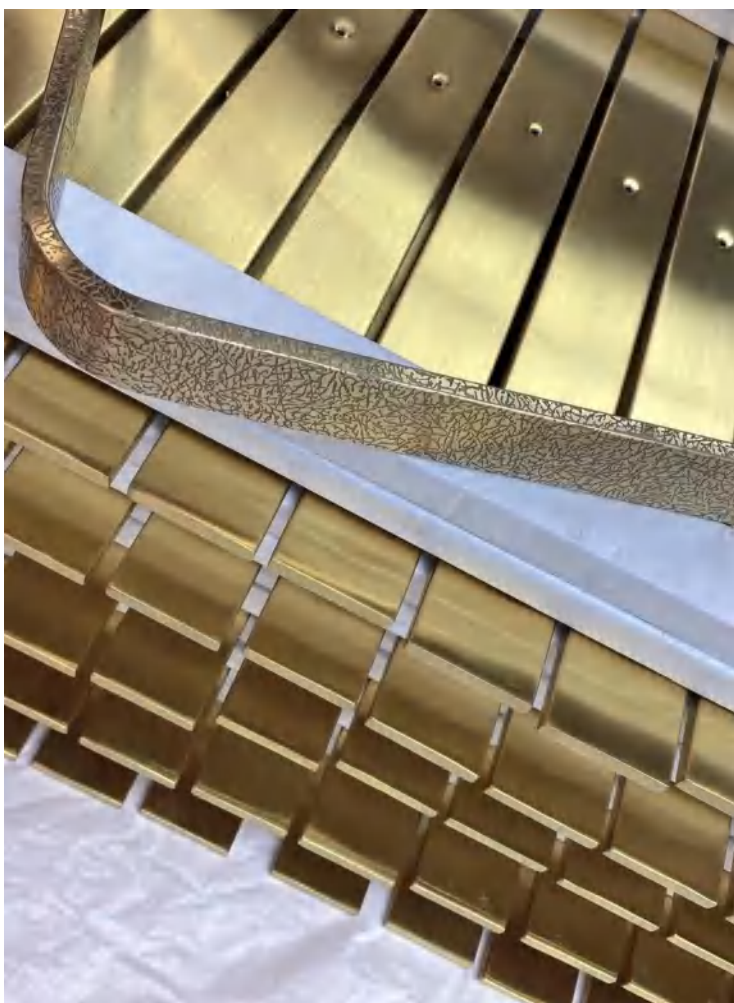


Crazy Metal

— One-stop solution for your commercial stainless steel projects

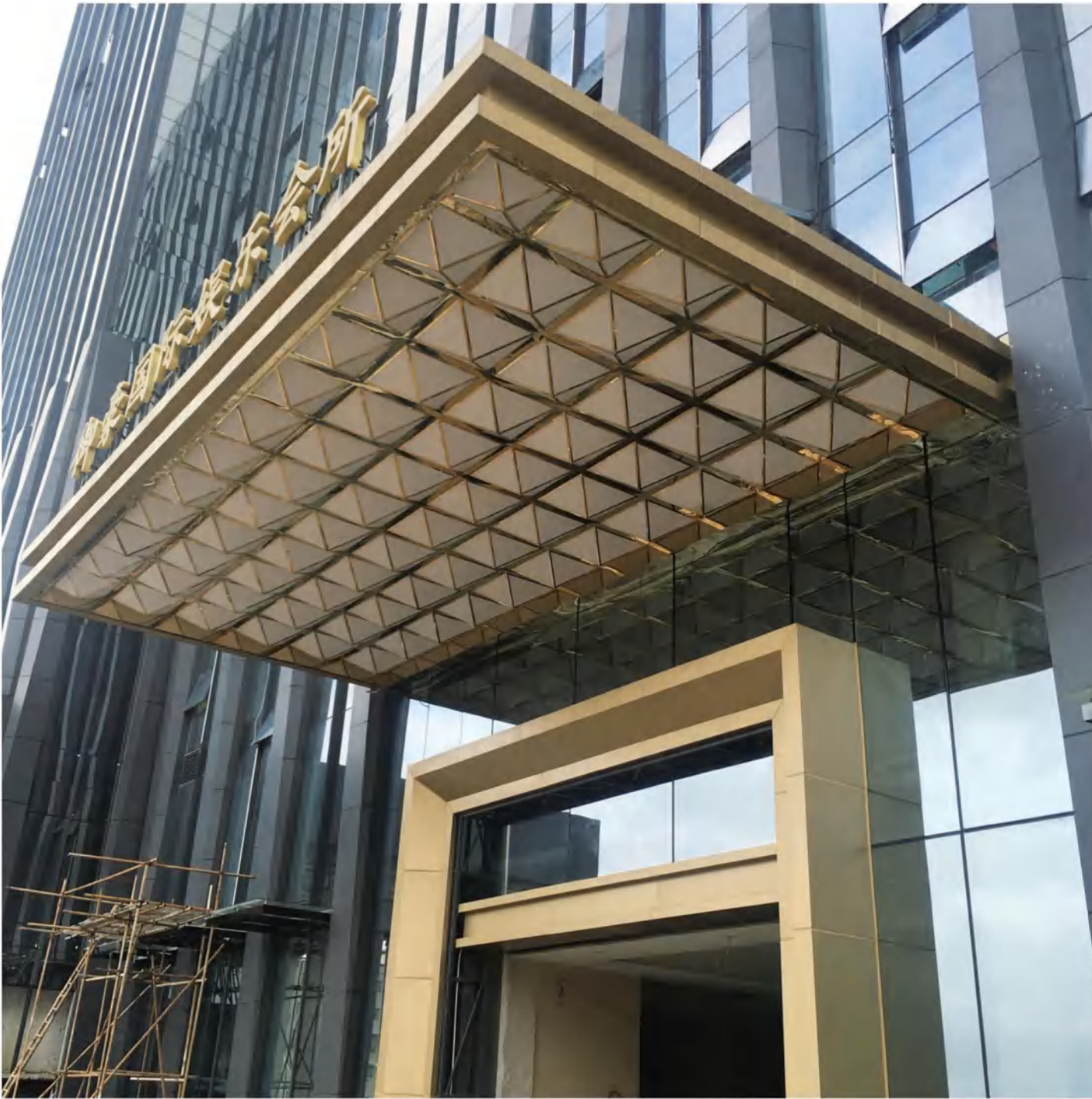




Crazy Metal performs precision laser cutting of plates and tubes according to customer specific requirements. With years of experience accumulated, the company provides high-quality services: we process different types of metals, regardless of size, creating simple or complex geometric shapes, suitable for any application.

To optimize the proposed service, Crazy Metal recently integrated production with a new 10Kw (10,000w) fiber laser cutting system. This intervention allows us to provide higher quality standards, expand the range of processed materials, while ensuring faster delivery times. In particular, Crazy Metal performs:

- Cutting metal plates and derivatives with a maximum size of 4m x 2m
- High-thickness sheet metal cutting
- Laser cutting iron up to 30 mm
- Laser cut stainless steel up to 35 mm
- Aluminum laser cutting up to 35 mm
- Brass laser cutting up to 15 mm
- Laser cutting pipes with a maximum diameter of 315 mm



Guangzhou Fangzhi
Real Estate

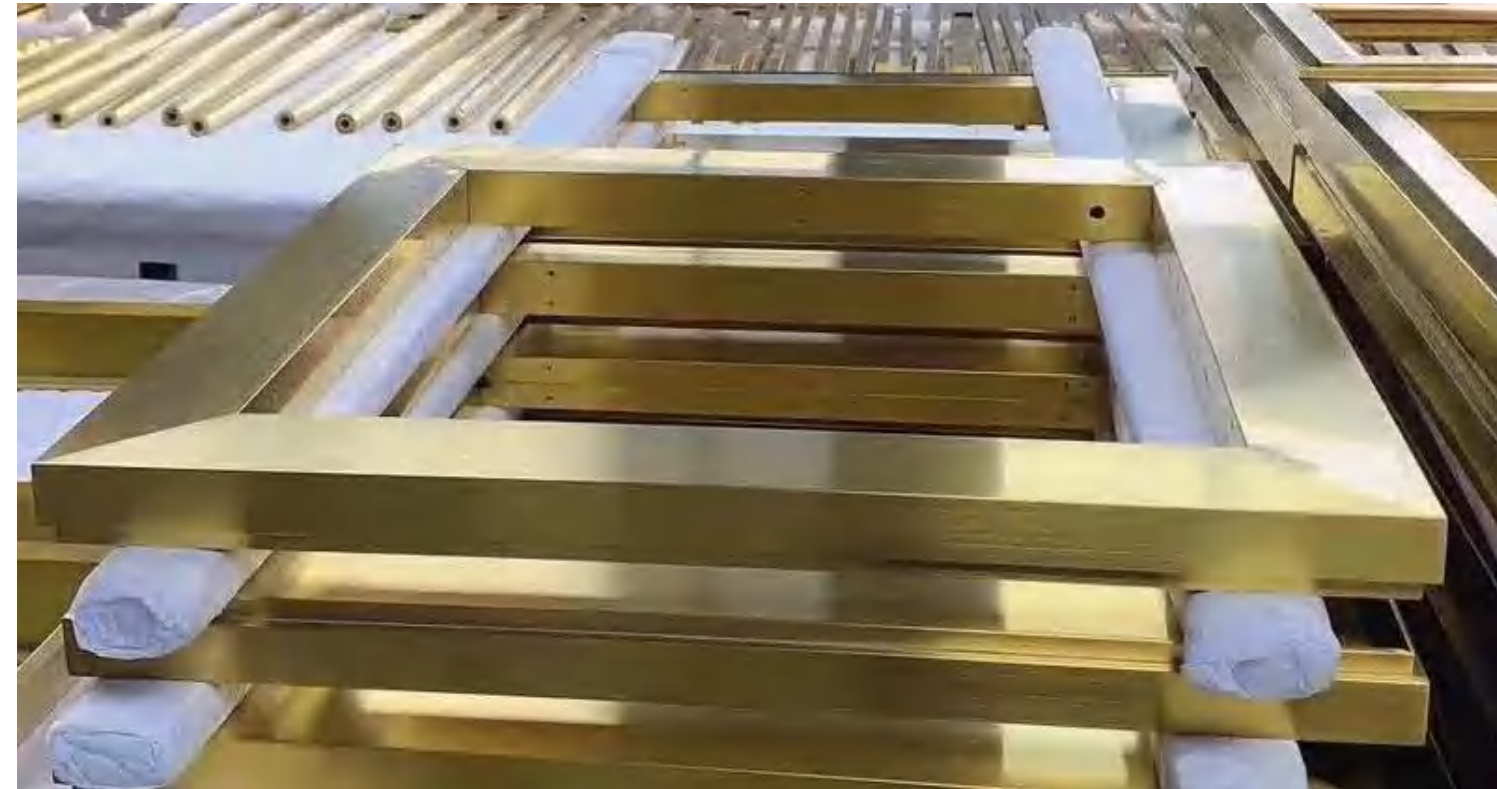
Project Name: Fangzhi
Real Estate

Project area: 600mm²

Project material: stainless
steel 304 decorative
panel, stainless steel
decorative strip, stainless
steel pipe screen,

Completion time: March
2016

Project address:
Guangzhou Tianhe
District, Guangzhou





Macau Wynn Decoration
Project location: Macau
Project area: 2000m²

Main material: titanium mirror
stainless steel, rose gold brushed
stainless steel, bronze brushed
stainless steel

Project introduction: After
preliminary research on Macau
casinos, Crazy Metal provided
customers optimized metal
decorations according to the
requirements of the casinos. The
metal parts of the entire project
are made of titanium mirror
stainless steel. Various metal
personalized pattern designs
present meticulous
entrepreneurial spirit, interpret
superb new products, and create
an elegant and comfortable
modern space.

Cooperative products: stainless
steel screens, stainless steel doors,
stainless steel door covers,
stainless steel handles

Case effect: The project was
completed ahead of schedule,
Crazy Metal saved the customer
a lot of time and gained the
customer's satisfaction.





Denmark Metro Project

General Contracting for
German Clients

Crazy Metal produces
130,000 meters of
stainless steel decorative
strips

The length tolerance per
meter is within +/-
0.1 mm, and the
straightness tolerance is
within +/- 0.1 degree.
Material meets German
standards.

Exports comply with EU
standards.

China-Europe Railway
Transport I.





Shenzhen Nan'ao
Marriott Hotel
Project location:
Shenzhen Nan'ao
Project area: 30000
square meters
Main material:
stainless steel wall
panel, stainless steel
honeycomb panel,
stainless steel column
Shenzhen Marriott
Hotel Kaisa sits on
Jinsha Bay, one of the
"Eight Coasts of
China"
Crazy Metal
participated in the
stainless steel
decoration project.
The amount of
stainless steel used
was 360 tons, which
was Crazy Metal's
largest project in
2015.
Among them, the
outdoor pavilion was
made of electroplated
gold stainless steel,
which is luxurious.
The project lasted 8
months



Waldorf Astoria Thailand
Project location: Thailand
Project area: 150,000 square meters

Main material: rose gold stainless steel, bronze brushed stainless steel
In July 2016, Crazy Metal produced stainless steel partition for the six-star Waldorf Astoria Hotel in Thailand. Length and height are 1390*2149mm. According to customers' demanding requirements, Crazy Metal provides customers with a complete set solutions. details decide the quality. With high-quality materials and exquisite handwork, Crazy Metal uses its own professionalism to create a set of exquisite partrition, giving designers and customers a satisfactory finished product. The combination of the partrition and the glass background wall shows the momentum of a 6 stars hotel.
Cooperative products: stainless steel screens, stainless steel background walls, stainless steel lines, stainless steel elevator plates
Case effect: Strict management of the production of brushed mirror stainless steel plates, including: raw materials, basic processing, production and installation, surface layer paste installation, finished product protection, etc., to ensure that the finished product meets the customer's high requirements. The hotel presents a luxurious and atmospheric space, The stainless steel decoration is in harmony with the atmosphere of the hotel.





Hotel Kinetic Facade in
Pattaya, Thailand

Bangkok customer turnkey
Crazy Metal annually
produces 30,000 sets of
original stainless steel plates
and accessories
The post-processing
"flashing silver powder
spraying" strictly controlled
the reflective brightness to
avoid affecting passing
vehicles.
Strictly controlled noise,
avoided friction and sound.
Material meets Thai
standards
Exports comply with Thai
standards
Completed in September
2021





Stainless steel Screen

design Haris Ahmad

The devil is in the details.
Far from being rigid and unyielding,
architectural metal is the medium through which
we create natural, decorative assets that stand
the test of time.

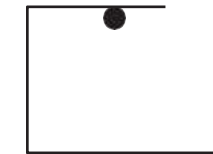
A few core capabilities include:

Perforated metal
Computer-aided design
Precision sequencing
3D modeling
CNC laser cutting
Custom fabrication
Acute angles and welding
CNC programming

Metallo perforato
Progettazione assistita da computer
Sequenziamento di precisione
Modellazione 3D
Taglio laser CNC
Fabbricazione personalizzata
Angoli acuti e saldatura
Programmazione CNC

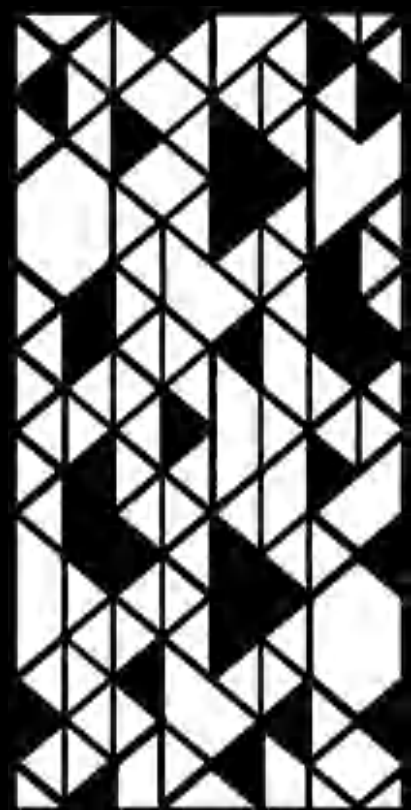
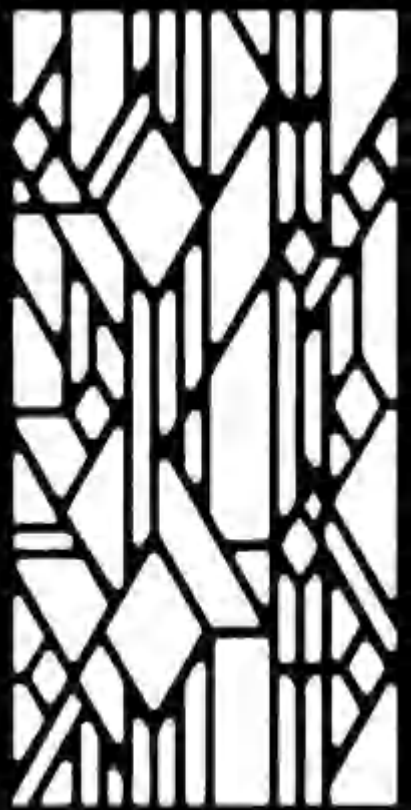
Métal perforé
Conception assistée par ordinateur
Séquençage de précision
modélisation 3D
Découpe laser CNC
Fabrication sur mesure
Angles aigus et soudure
Programmation CNC
CNC programming

Перфорированный металл
Системы автоматизированного
проектирования
Прецизионное секвенирование
3D моделирование
Лазерная резка с ЧПУ
Изготовление на заказ
Острые углы и сварка
Программирование ЧПУ



2700K
Led E27 6W
810 lumen





Stainless steel screen

One-stop solution for your stainless steel projects



Fairmont Riyadh, Saudi Arabia
Project location: Saudi Arabia
Project area: 150,000 square meters
Main material: rose gold stainless steel, bronze brushed stainless steel
In July 2012, Crazy Metal designed stainless steel mesh partitions for the six-star Fairmont Hotel in Riyadh, Saudi Arabia. Length and height are 1390*2149mm. Crazy Metal provides customers with a complete set of partition solutions according to their demanding requirements. The details of the screen determine the grade of the partition. With high-quality materials and exquisite handwork, Crazy Metal uses its professionalism to create a set of exquisite partitions, giving designers and customers a satisfactory presentation. The combination of the partition and the glass background wall demonstrates the magnificence of the star hotel.
Cooperative products: stainless steel screens, stainless steel background walls, stainless steel lines, stainless steel elevators



Farimont hotel in Riyadh





Farimont hotel in Riyadh



Sukosol Hotel Thailand

Project location: Thailand

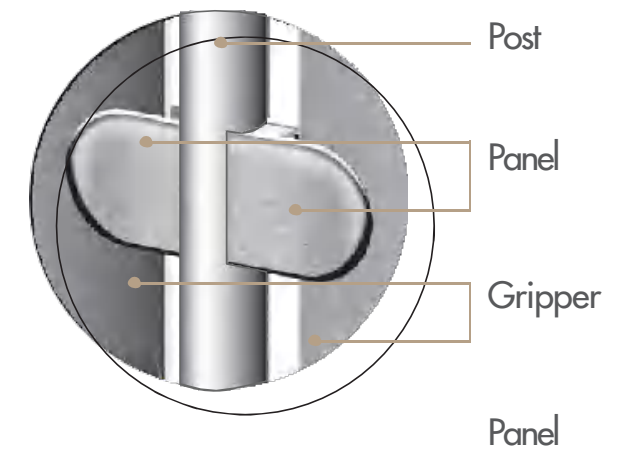
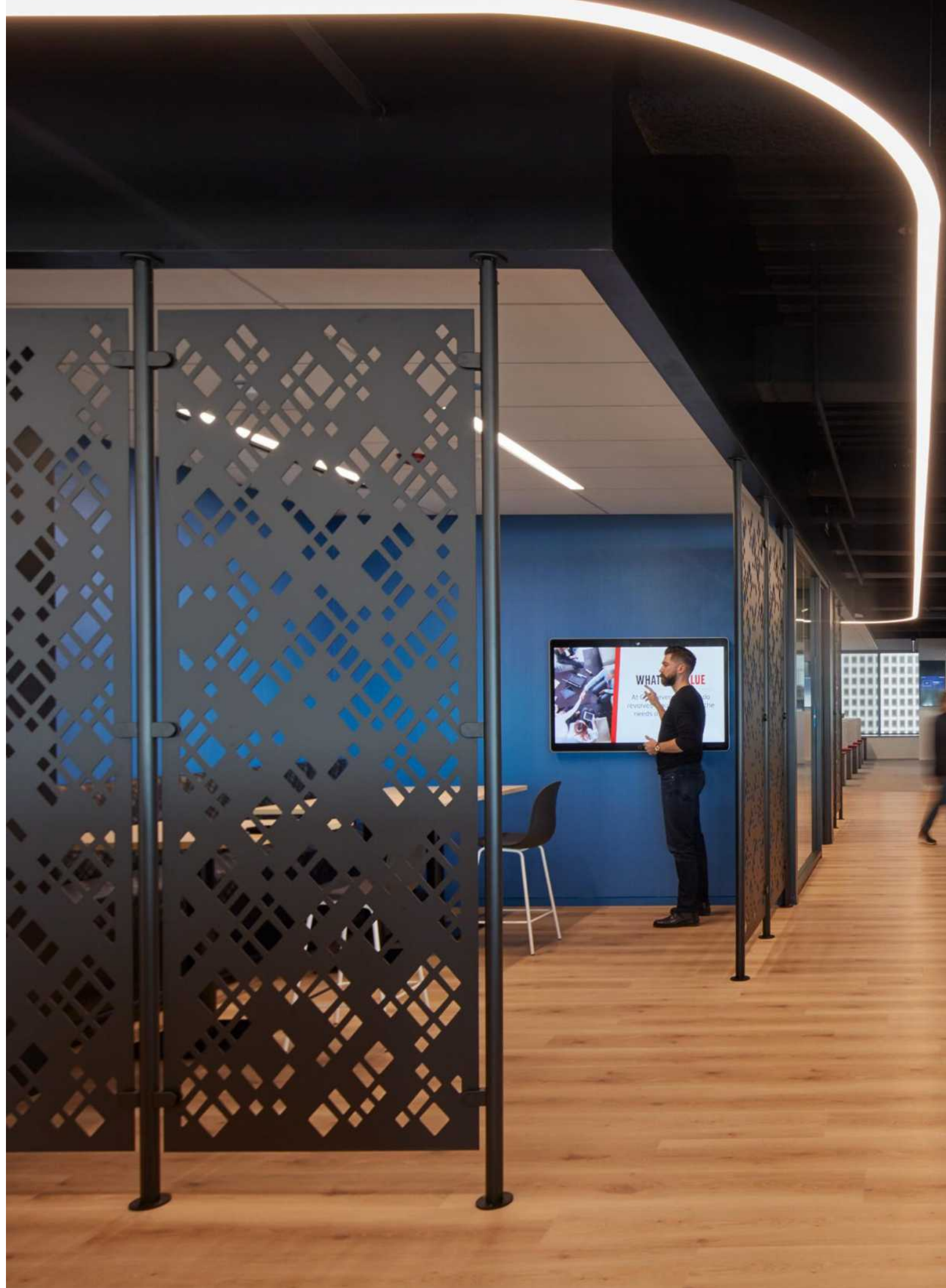
Project area: 2200 square meters

Main material: mirror stainless steel

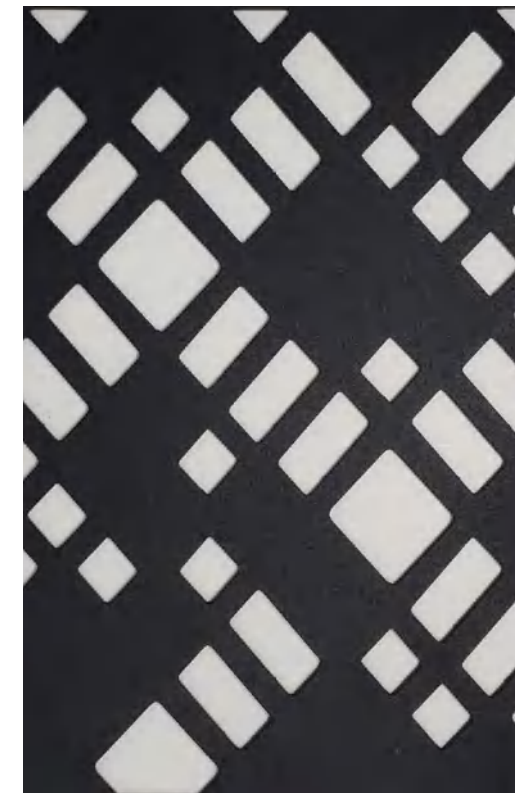
In July 2013, Crazy Metal produced stainless steel screens in the hotel for Sukosol Hotel in Thailand. The length and height are 1000 by 6000mm. Crazy Metal follows up customer design plans and strictly implements customer requirements. With high-end materials, exquisite cutting, and perfect detail processing, the designer's concept is realized to the greatest extent. Super high flatness, perfect mirror effect, the screen produced by CRAZY METAL enhances the consistency of the hotel style.

Cooperative products: stainless steel screens, stainless steel background walls, stainless steel lines, stainless steel elevators





Panels include posts with brackets and grippers for a complete room divider kit ready for installation.





Stainless steel coffee table

One-stop solution for your stainless steel projects



Thanks to the expertise acquired over the years and the cutting-edge machinery, Crazy Metal carries out metal welding operations according to the specific needs of the customer. In particular, it carries out TIG, MIG, MAG, OXYACETYLENE, brazing welding. Each type of welding takes place through different procedures and with the use of specific machinery. For each field of application, Crazy Metal provides a careful evaluation to define the most suitable type of welding.



Selection of stainless steel materials:
Stainless steel national standard materials are cold-rolled products produced by stainless steel plants with cold-rolled and hot-rolled materials. The surface color is relatively uniform and does not contain dark stripes. Non-standard materials are generally private manufacturers who re-roll cold-rolled products into thinner cold-rolled products. Compared with national standard materials, non-standard materials have a darker surface. It may also have dark stripes



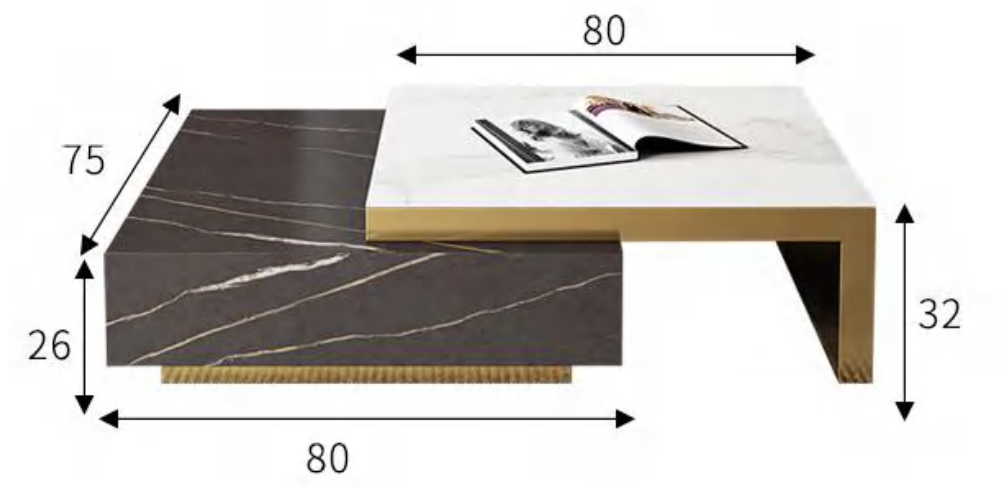


It takes at least 1 hour for a batch of products to be electroplated to ensure stable color and cannot be taken out in advance. When electroplating a color, all products of that color need to be completed in sequence, and products of other colors cannot be added temporarily. The electroplating workshop needs to work in an orderly manner.











Stainless steel Door frame

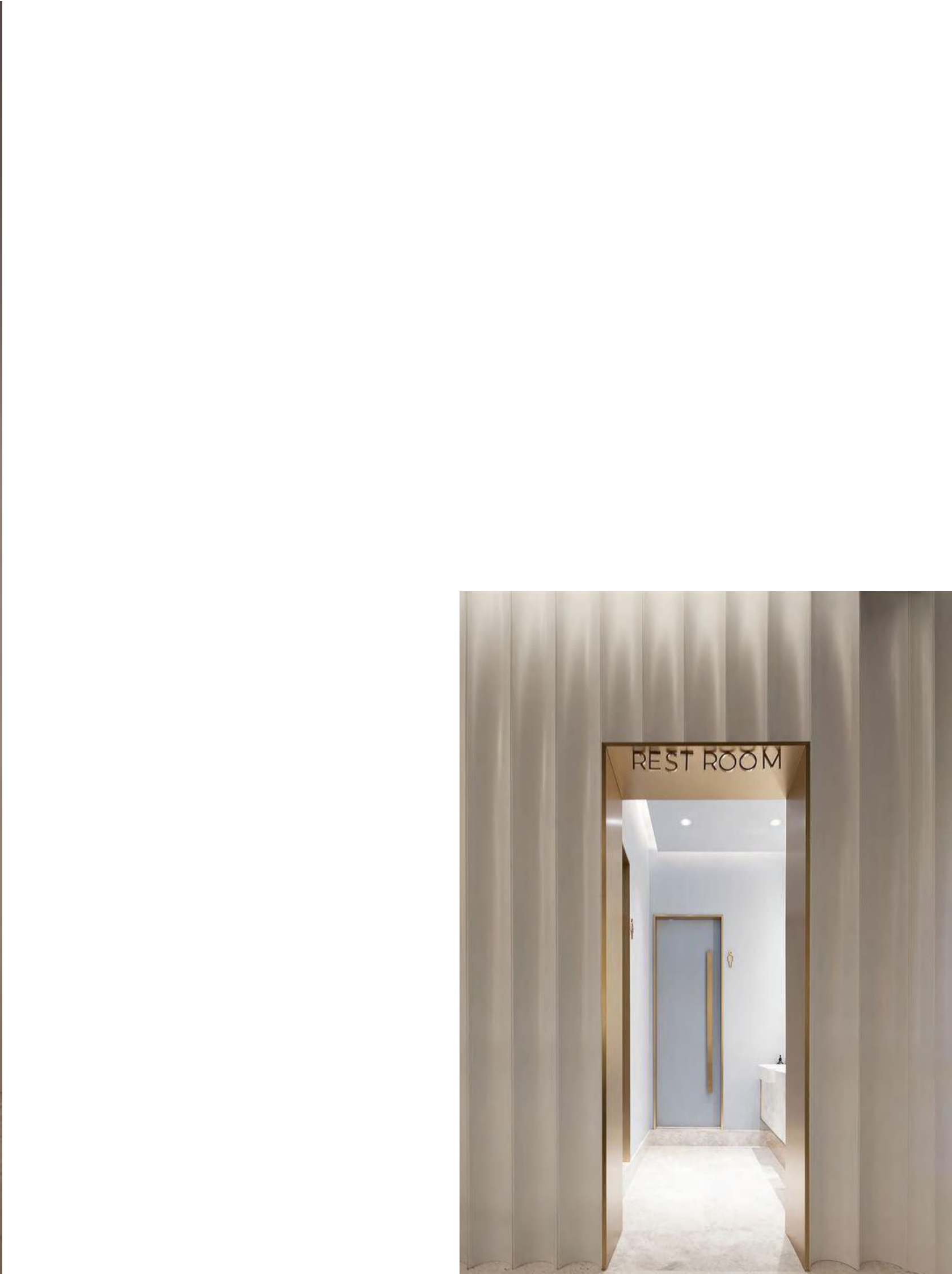
One-stop solution for your stainless steel projects

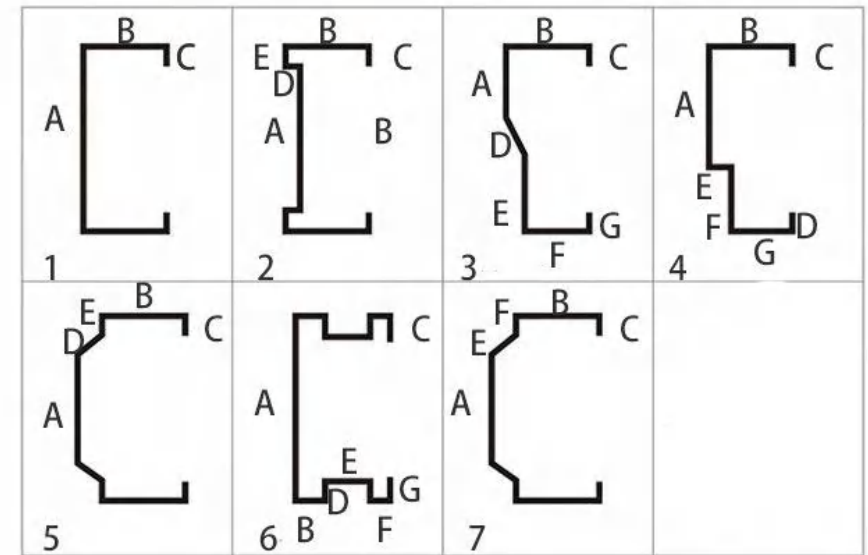




Stainless steel surface inspection method: Be sure to check carefully and observe whether there is any color difference on the surface, whether the coloring is uniform, whether the color is pure, whether there are defects such as scratches, peeling, blisters, and water marks. Especially titanium, mirror and so on. Good quality mirror effect, without any grinding head and horseshoe marks on the surface, the mirror brightness is relatively high.







Pitlot Hotel in Chongqing

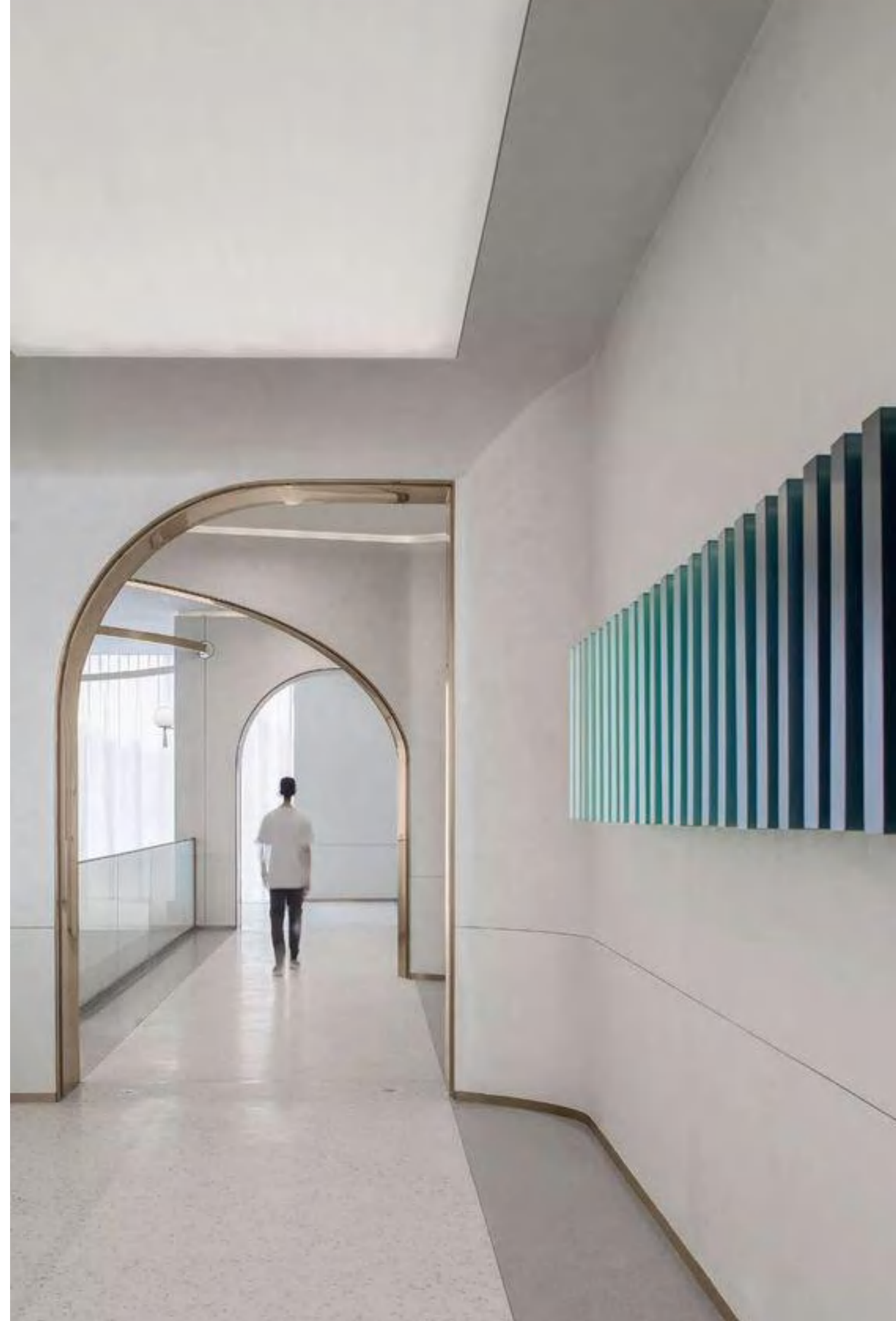
Application material: The stainless steel modeling wall is composed of stainless steel honeycomb panels and LED lights

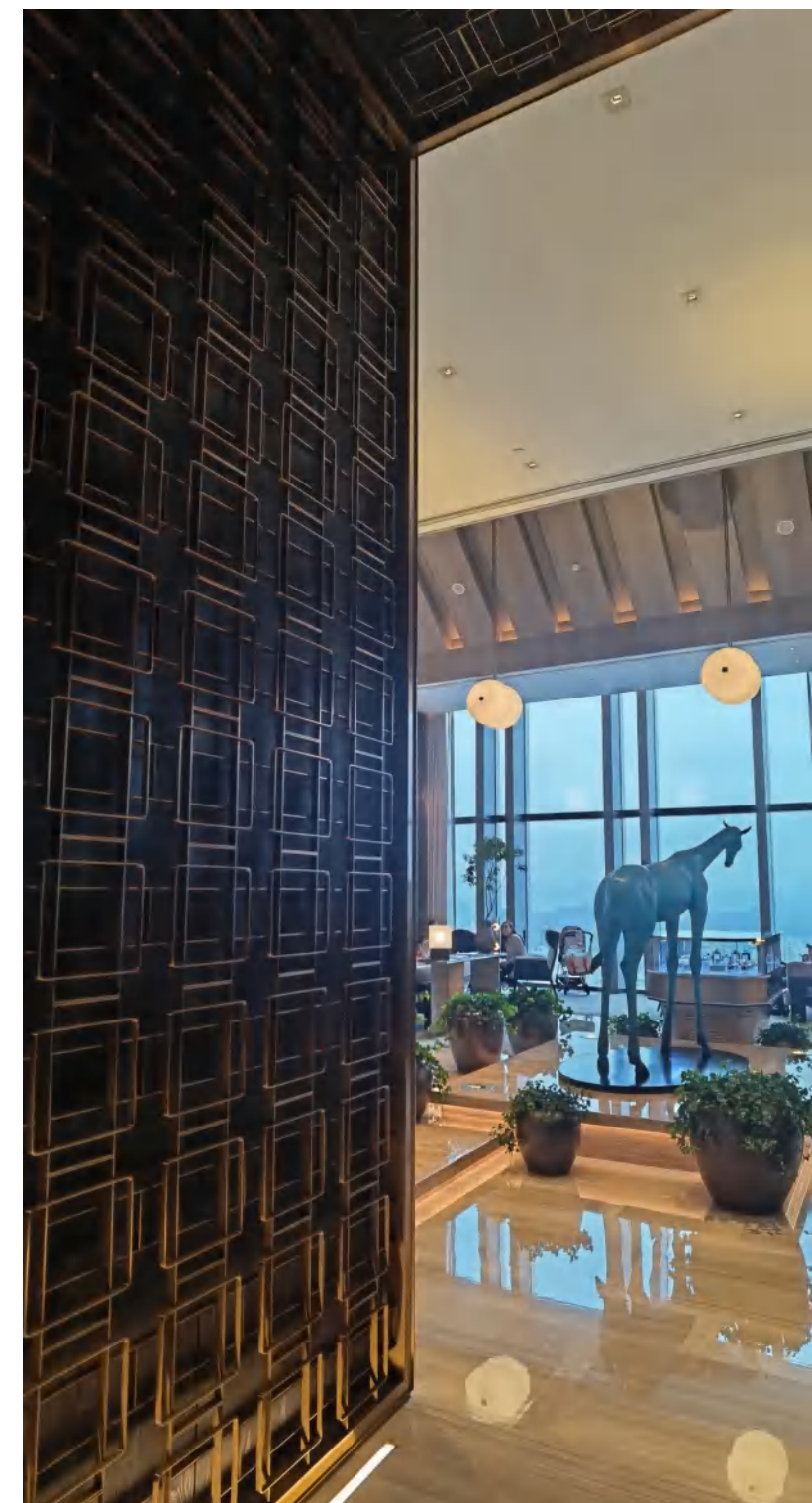
Completion time: 5,23, 2020

Project Location: ChongQing, China

Project area: 3000m²

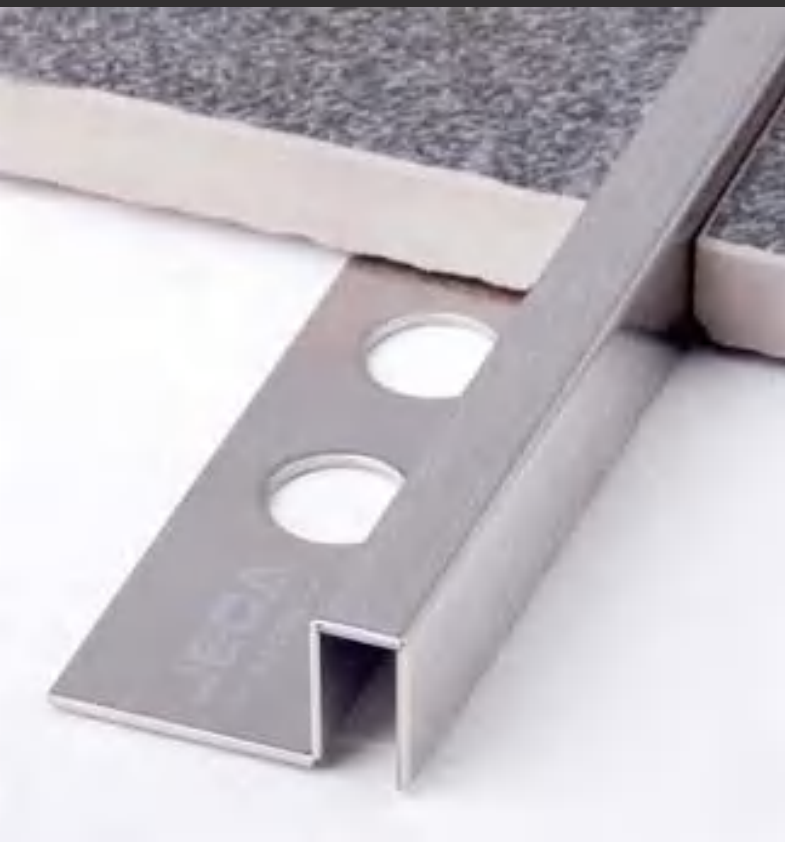
Our pre-formed and sized modeling walls help greatly save the time and labor cost while achieving most upscale look to your commercial or office space. With simple brackets and hanging poles they take short time to complete the installation. They can combine other materials as well as LED lighting.

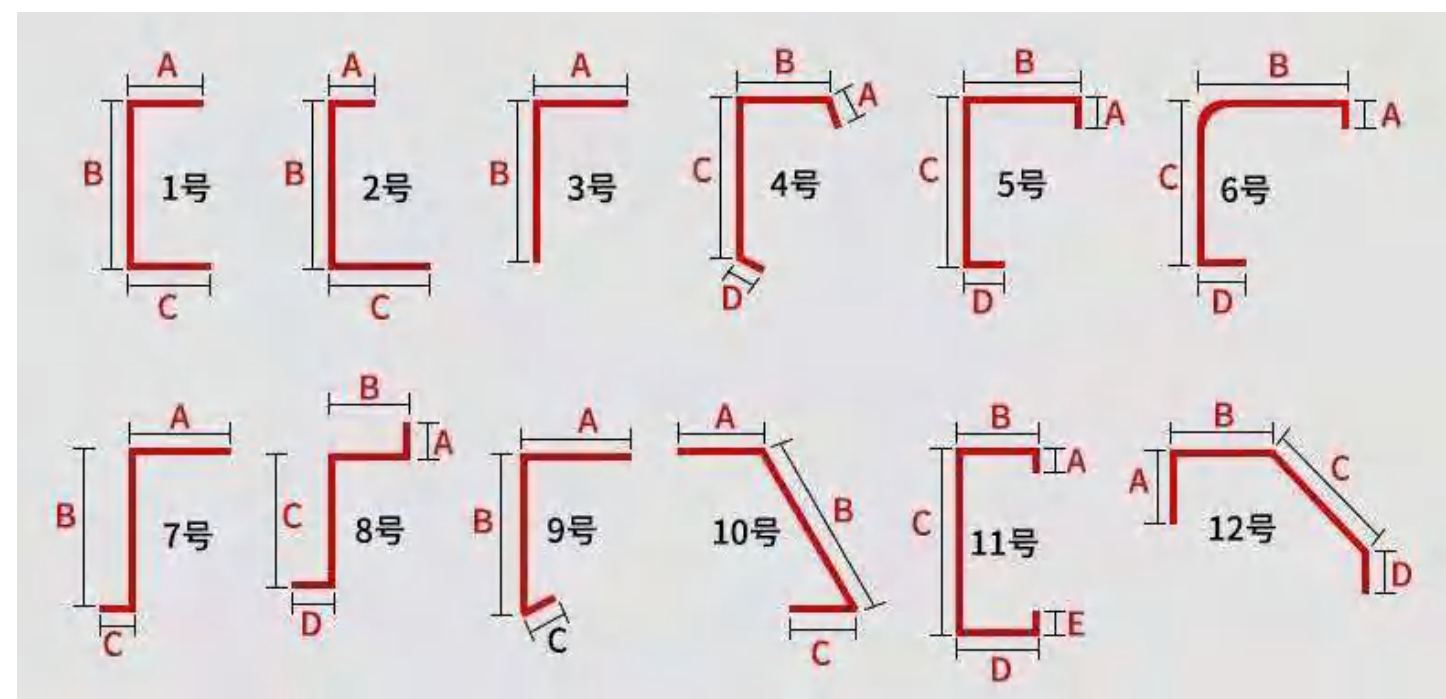
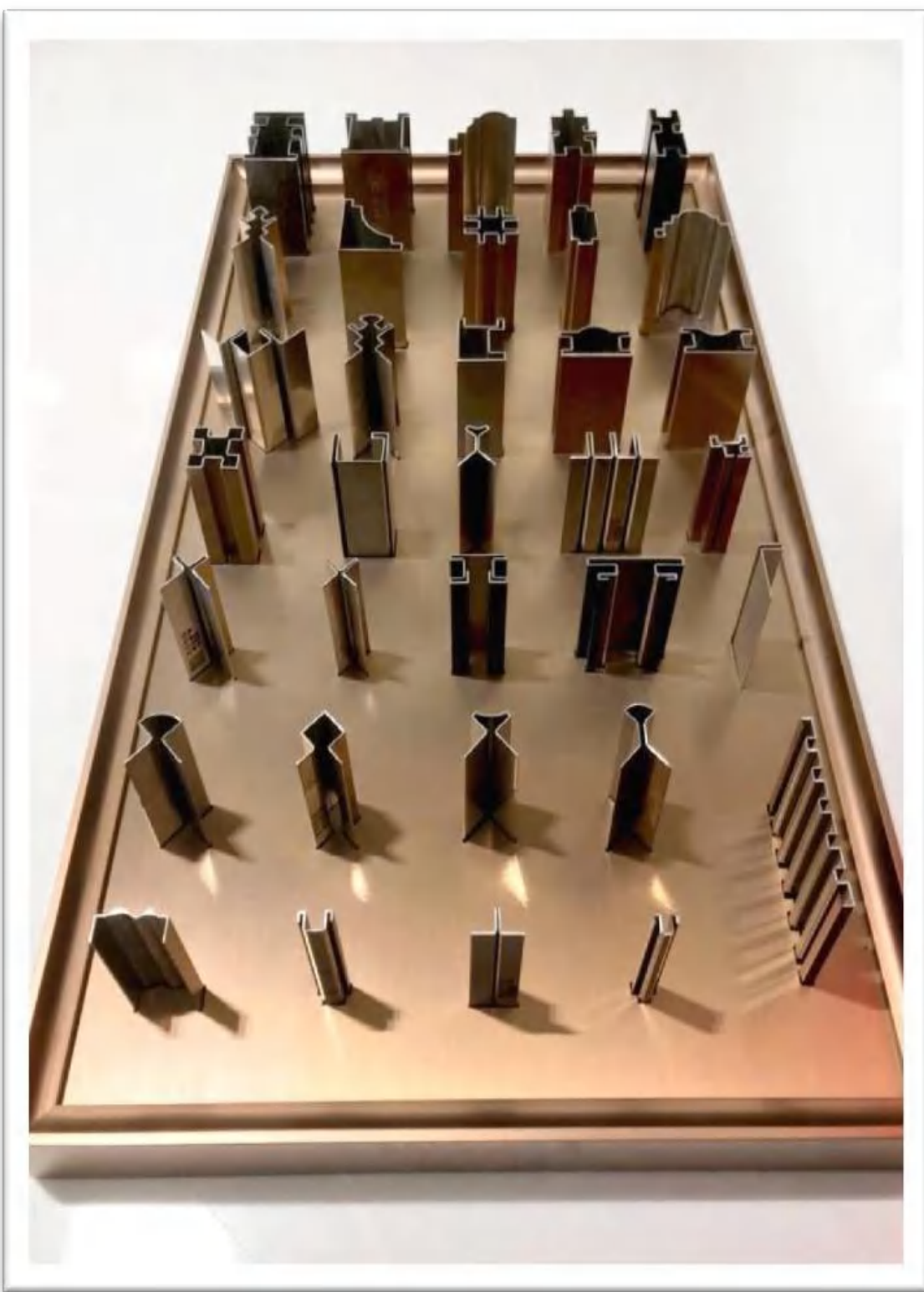


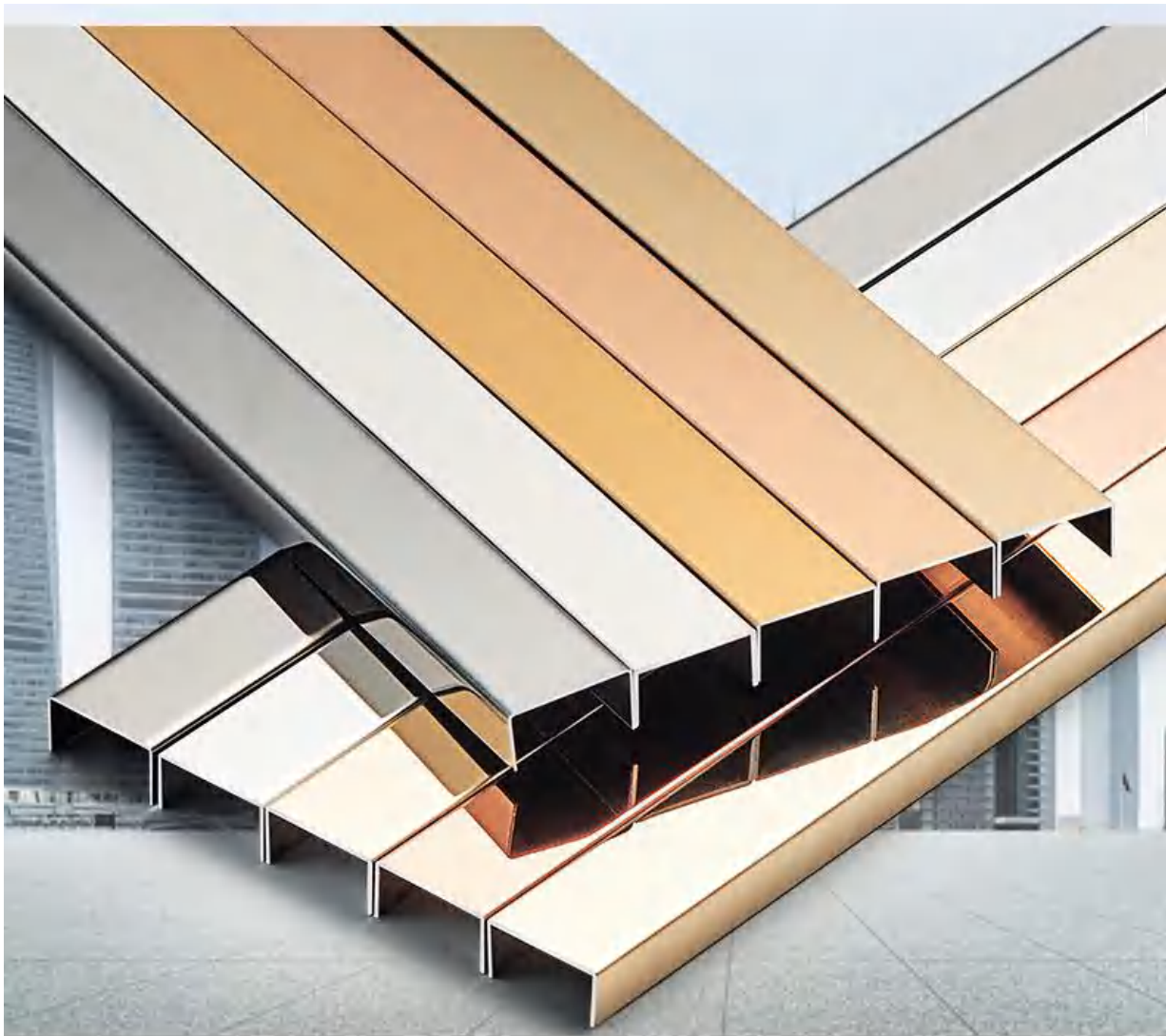


Stainless steel Trim

One-stop solution for your stainless steel projects











Crazy Metal, an innovative enterprise specializing in the production of decorative stainless steel materials. Since 2009, the research and development of stainless steel decorative trim has been carried out. The newly designed decorative trim have obtained many national patents such as "utility model patents" and "appearance design patents". It is exported to the United States, Spain, Italy and other European countries, and exported to the Middle East, Africa and other countries. It is well received by domestic and foreign distributors, agents and customers.



Color option



1S: Silver Shiny



1B: Silver Brushed



2S: Gold Shiny



2B: Gold Brushed



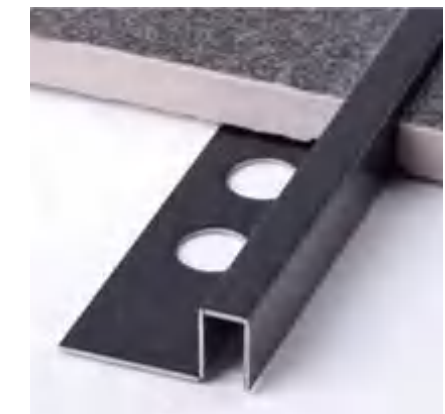
3S: Rose Gold Shiny



3B: Rose Gold Brushed



4S: Black Shiny

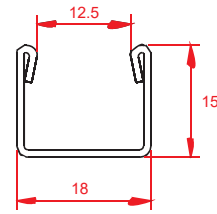


4B: Black Brushed

Glass Holder Profiles



SB041

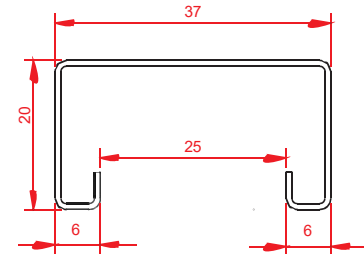


Stainless Steel 304/316 fl fi304/316

ART. H ^a	Width 宽度 (mm)	Length 长度 (mm)	Thickness 厚度 (mm)	Color 颜色 %	Remark 备注 K
SB041-12.5W	12.5	2440	0.8, 1.0	1S, 2S, 3S, 4S, 1B, 2B, 3B, 4B Color option refer to P2. \$ P2	Sizes can be customized. fifl fififi

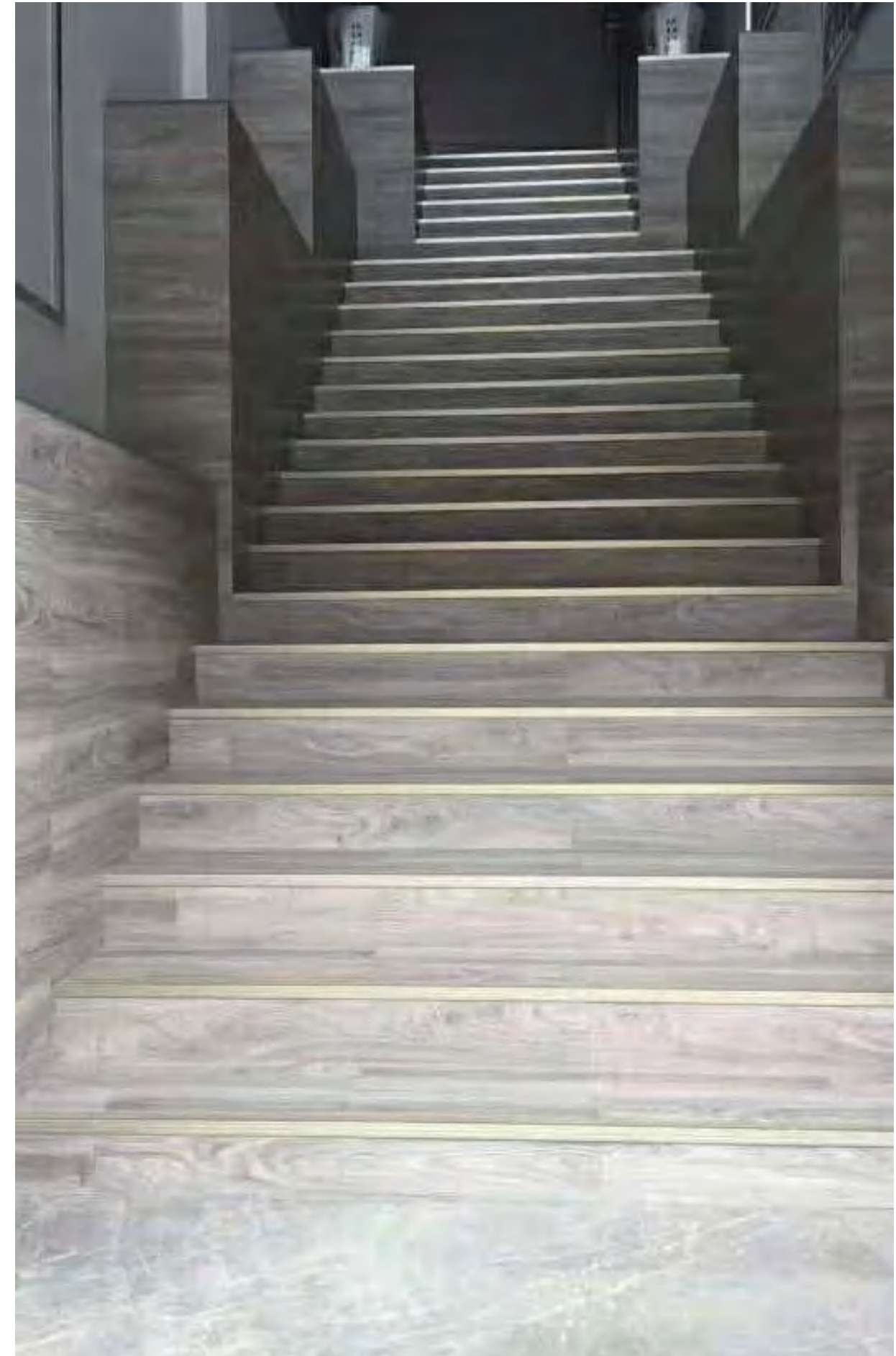


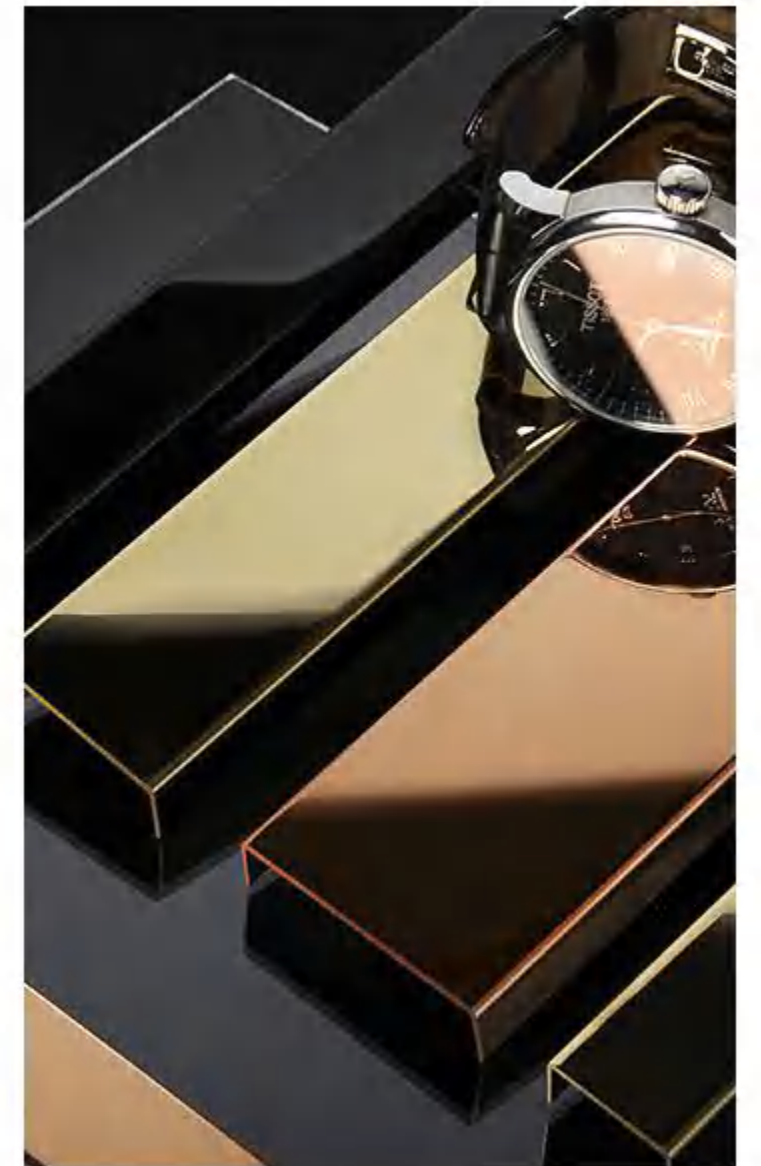
SB043



Stainless Steel 304/316 fl fi304/316

ART. H ^a	Width 宽度 (mm)	Length 长度 (mm)	Thickness 厚度 (mm)	Color 颜色 %	Remark 备注 K
SB043-25W	12	2440	0.8, 1.0	1S, 2S, 3S, 4S, 1B, 2B, 3B, 4B Color option refer to P2. \$ P2	Sizes can be customized. fifl fififi









Stainless steel Lamp

One-stop solution for your stainless steel projects



— Dark Light

_Hanging lamp with concentric satin brass rings, central lighting body and adjustable steel cables. It is a reinterpretation of some office lamps commonly called "darklight" with an innovative approach.

_Lampada a sospensione con anelli concentrici in ottone satinato, corpo luminoso centrale e cavi in acciaio regolabili. Si tratta di una reinterpretazione di alcune lampade da ufficio comunemente chiamate "darklight" con un approccio innovativo.

_Lampe à suspension avec anneaux concentriques en laiton satiné, corps central allumant et câbles en acier réglables. Il s'agit d'une réinterprétation des lampes de bureau communément appelées "darklight" avec une approche innovante.

_Hängelampe mit konzentrischen Messingringen, zentralem Beleuchtungskörper und verstellbaren Stahlkabeln. Es ist eine Neuinterpretation von einigen Bürolampen, die als "darklight" genannt werden, mit einem innovativen Stil.

_Подвесная лампа с концентрическими кольцами из сатинированной латуни, центрального светящегося тела и регулируемые проводами из стали. Здесь говорится об интерпретации некоторых офисных ламп с принятым названием "darklight" в новаторском ключе.



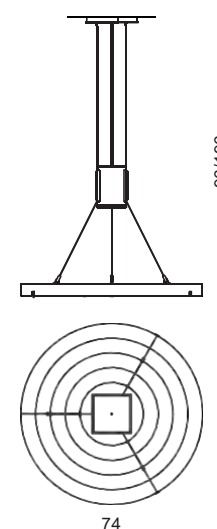
The optical effect of Dark Light is fascinating because the light source is not visible from a distance and, only by approaching, the light is revealed through the reflector, creating a concentrated intensity directly under the lamp.

L'effetto ottico creato dalla lampada Dark Light è affascinante perché la fonte luminosa non è visibile da lontano e, solo avvicinandosi, la luce si rivela attraverso il riflettore, creando un'intensità concentrata direttamente sotto la lampada.

L'effet optique de la lampe Dark Light est fascinante car la source de lumière n'est pas visible de loin, et, seulement en approchant, la lumière est révélée par le réflecteur, ce qui crée une intensité concentrée directement sous la lampe.

Der optische Effekt von Dark Light ist faszinierend, weil die Lichtquelle aus der Ferne unsichtbar ist. Nur durch Annäherung das Licht sichtbar wird und es schafft eine konzentrierte Intensität direkt unter der Lampe.

Оптический эффект, создаваемый светильником Dark Light, завораживает, потому что направления потока света издалека не видно, оно обнаруживается посредством отражателя только при приближении, создавая концентрированное освещение непосредственно внизу, под светильником.





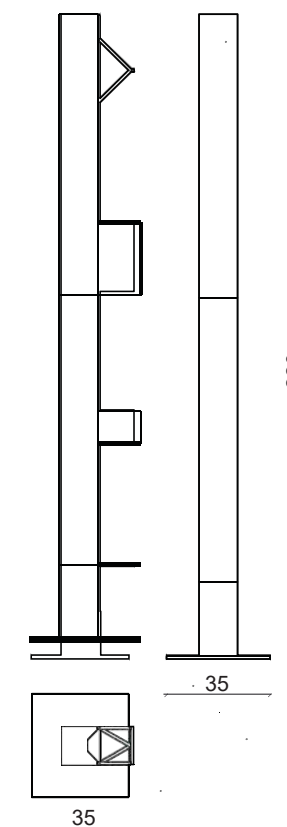
Shadow Structure is both a lamp and a decorative object, a product designed to be incorporated within a larger interior scenario where it is immediately visible.

Shadow Structure è sia una lampada sia un oggetto decorativo, un prodotto disegnato per essere incorporato all'interno di un ambiente interno più ampio, dove è immediatamente riconoscibile.

Shadow Structure est à la fois une lampe et un objet décoratif, un produit conçu pour être incorporé dans un environnement intérieur plus vaste où il est immédiatement visible.

Shadow Structure ist sowohl eine Lampe als auch ein dekoratives Objekt; ein Produkt, das in einer größeren Innenumgebung benutzt werden soll, wo es sofort sichtbar ist.

Shadow Structure - это светильник, и декоративный предмет; изделие, задуманное для того, чтобы быть "встроенным" внутри более крупного пространства, где сразу же узнается.



Stainless steel Shower Room Set

One-stop solution for your stainless steel projects

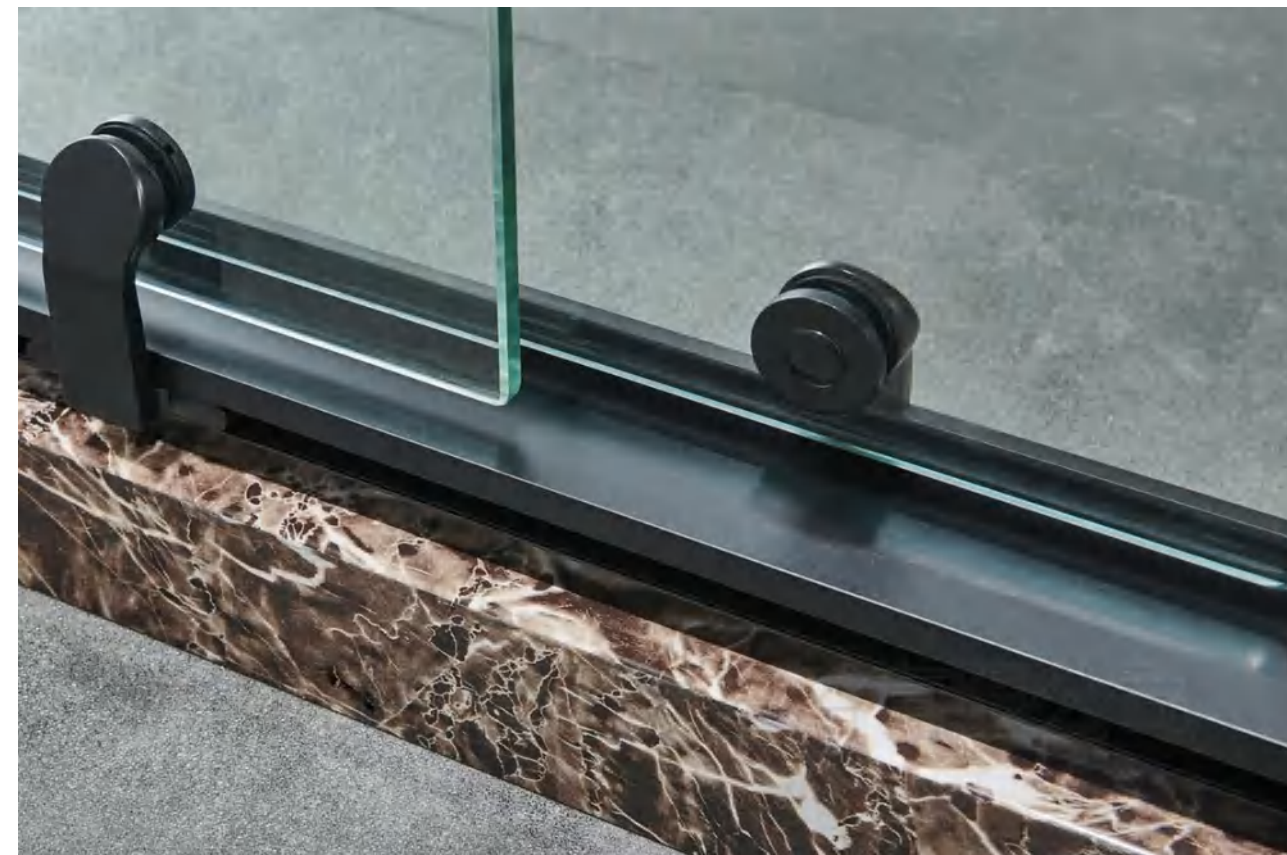




Crazy Metal, an innovative enterprise specializing in the production of stainless steel decorative materials. In 2014, the research and development of stainless steel shower room began. The newly designed integral shower room has obtained a number of national patents such as "utility model patents" and "appearance design patents".

The main markets are the United States, China, Thailand, the Middle East, Africa and other countries. Well received by customers at home and abroad.





Packaging and transportation

One-stop solution for your stainless steel projects







Crazy Metal combines 20 years of experience in stainless steel processing, coupled with the desire for continuous improvement of products and production processes, and developed a unique processing technology: CIMO METALFOLDING.

This technology can create exquisite and clean stainless steel products with absolute attention to detail to achieve an impeccable final result: boxes and structures without screws and pins, as if they were natural movements supported by materials. The object is aimed at the refined and demanding market, combining technical and aesthetic qualities.

The folding process involves making V-shaped cuts in the metal plate, which are in contact with the vertices of the cuts. The plate is then milled and bent to obtain a sharp edge, usually 90°. The product is finished with extremely high precision without any mechanical joints.

Building 7, Liuhe Science and
Technology Park, Pingshan
District, Shenzhen,
Guangdong, China

T +86 18688779774
T +86 14775544236

stella@crzmetal.com
adele@crametal.com

www.crzmetal.com

